

# MONTHLY MEMBERSHIP PROGRESS REPORT

LOCATION TEXAS

District 2 A1

Results as of: 5/31/2023

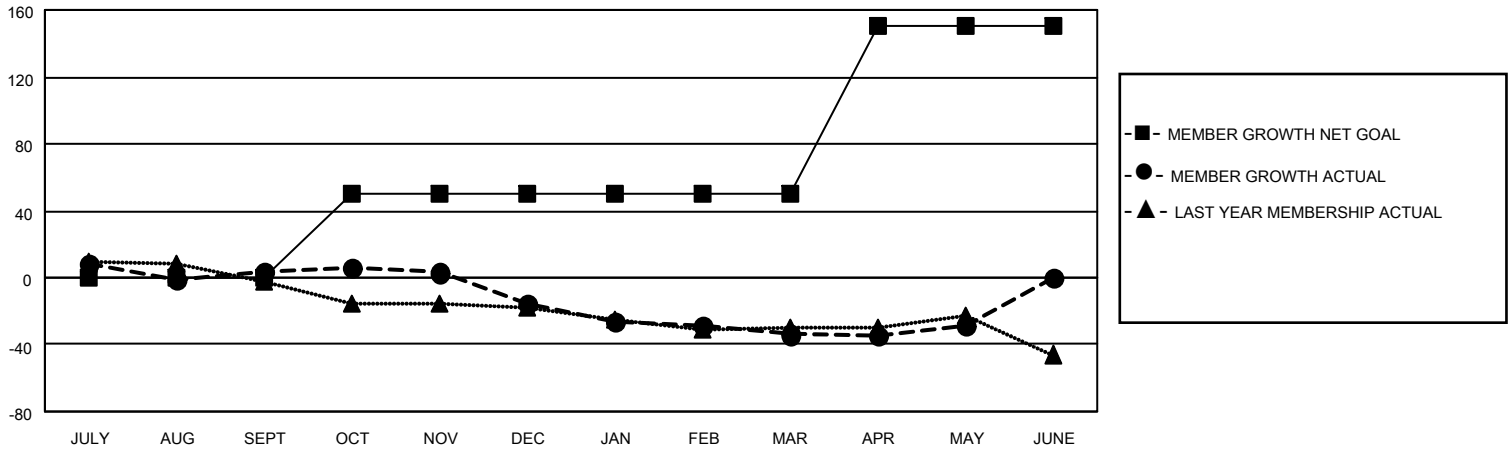
Clubs			
RESULTS FOR 2022-2023			
QUARTER	NEW CLUB GOAL	NEW CLUBS	DROPPED CLUBS
JULY/AUG/SEPT	0	0	0
OCT/NOV/DEC	1	0	1
JAN/FEB/MAR	0	0	0
APR/MAY/JUNE	1	0	0

Members			
RESULTS FOR 2022-2023			
QUARTER	MEMBER GROWTH NET GOAL	MEMBER GROWTH ACTUAL	DROPPED MEMBERS ACTUAL (including transfers)
JULY/AUG/SEPT	0	42	33
OCT/NOV/DEC	50	27	47
JAN/FEB/MAR	0	13	31
APR/MAY/JUNE	100	17	11

**GOALS AND ACTUAL NEW CLUBS CUMULATIVE**



**GOALS AND ACTUAL MEMBERS CUMULATIVE**



**DROPPED CLUBS: 1**

**22 CLUBS OF 40 ADDED 1 OR MORE NEW MEMBERS**

**GENDER DISTRIBUTION**

MALE	664 (66.47%)
FEMALE	335 (33.53%)
NON BINARY	0 (0.00%)
PREFER NOT TO ANSWER	0 (0.00%)

**DROPPED MEMBERS**

[CLICK HERE FOR CUMULATIVE MEMBERSHIP DATA](#)

DECEASED	12
CLUB CANCELLED	15
OTHER	95
<b>TOTAL</b>	<b>122</b>

TOTAL FAMILY UNIT MEMBERS	113
FAMILY MEMBERS PAYING HALF DUES	57